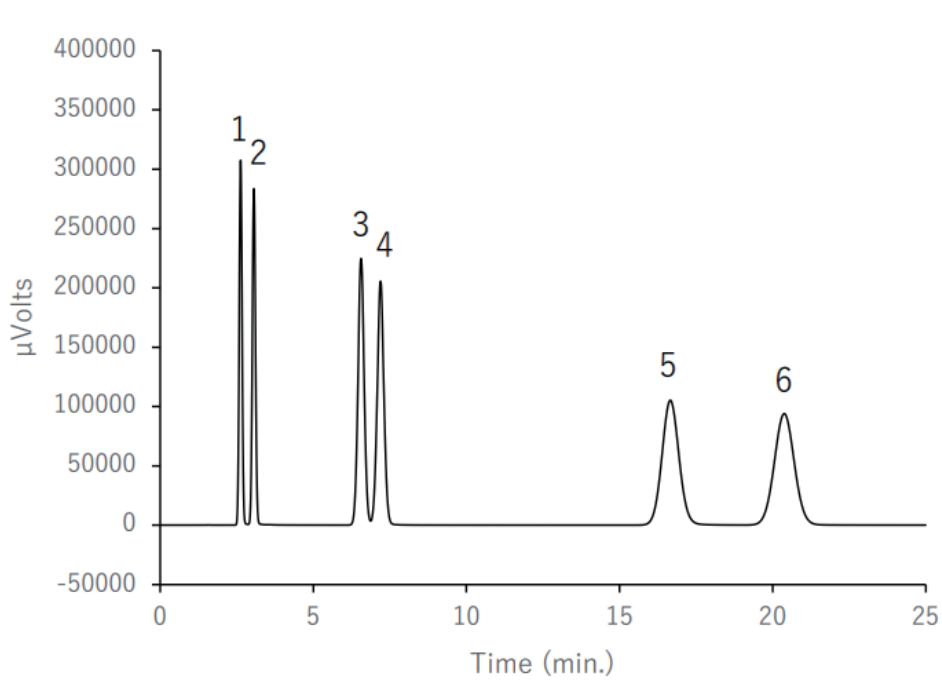


# 炭化水素の分析例



1. Ethylene
2. Ethane
3. Propene
4. Propane
5. *iso*-Butane
6. *n*-Butane  
(100 ppm in He)

Column : Porapak Q 80/100  
SUS 4 m  $\times$  1/8" O.D.  
Col. Temp. : 120  $^{\circ}\text{C}$   
Carrier Gas : He 20 mL/min  
Detection : FID Auto Range  
Sample Size : 2 mL  
(ガスサンプラー使用)