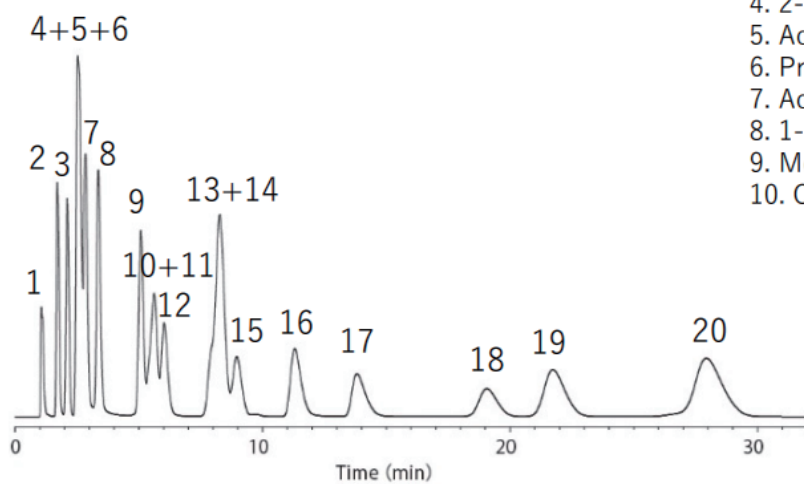


有機溶剤 20 成分一斉分析



- | | |
|------------------------|-----------------------------------|
| 1. Methanol | 11. Ethyl acetate |
| 2. Ethanol | 12. Methyl Cellosolve |
| 3. Acetonitrile | 13. Trichloroethane |
| 4. 2-Propanol | 14. Benzene |
| 5. Acetone | 15. Trichloroethylene |
| 6. Propionaldehyde | 16. 2-Ethyl Cellosolve |
| 7. Acrylonitrile | 17. <i>N,N</i> -dimethylformamide |
| 8. 1-Propanol | 18. Tetrachloroethylene |
| 9. Methyl ethyl ketone | 19. Isobutyl acetate |
| 10. Chloroform | 20. Chlorobenzene |

Column : Gaskuropack 54 80/100
SUS 2 m × 1/8" O.D.

Col. Temp. : 175 °C

Carrier Gas : He 20 mL/min

Injection : 250 °C

Detection : FID Auto Range
250 °C

Sample Size : 0.2 μL